



## SMT First Article Inspection System

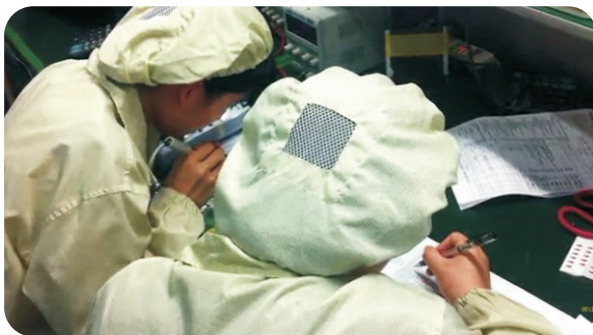
**FAI-600IV**

# FAI-600IV

## First Article Inspection System

*Powerful First Article Inspection System offering unparalleled automated manufacturing verification test and reporting capabilities.*

The BLUIRIS FAI-600IV First Article Inspection System quickly and accurately verify First Article Samples. Using advanced optical and computing techniques, the FAI-600IV measures properties of an initial sample against the specifications. Tests conducted include checking whether a correct component has been used, whether a component is in the defined location, and whether a component is positioned accurately. The values of components such as resistors, capacitors and inductors can be automatically checked and verified. The system can eliminate up to 99.99% errors due to manual inspection methods. Test results are provided in insightful, detailed reports.



**VS**



## First Article Inspection Introduction



### 1、 Save Labor Cost

With traditional methods and approaches, the first inspection process typically requires at least two operators to perform the task. With the FAI-600IV, only one operator is required.



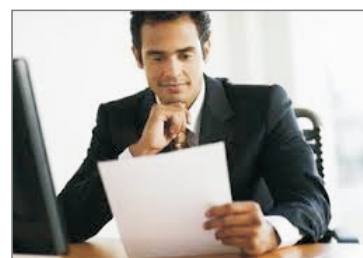
### 2、 Save Time

Reduce the time it takes to perform first article inspections by up to 80%.



### 3、 Improve Quality

Eliminate up to 99.99% of errors caused by manual methods.



### 4、 First Article Inspection Report

Comprehensive reporting including pass/fail information, observed values, and insightful charts and graphs. Reports can be viewed, printed, saved or emailed.



### 5、 Easy to use

Intuitive and easy to use. FAI-600IV operators can learn to use the FAI-600IV in under two days.

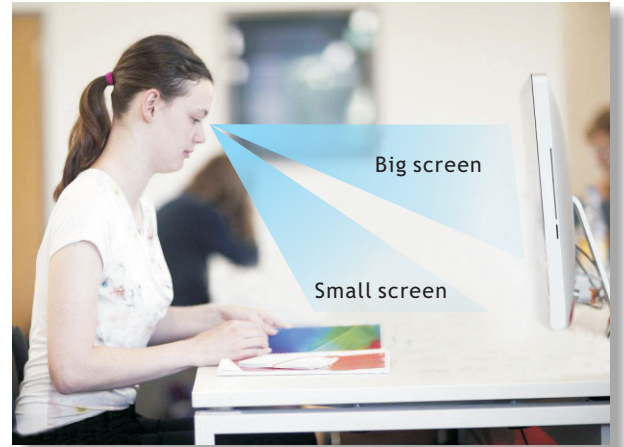


### 6、 Multiple Customer Deployments

FAI-600IV systems are deployed at hundreds of customer sites. Representative customers include Benchmark, Celestica, VALEO, VIVO. See more of our customers in back cover

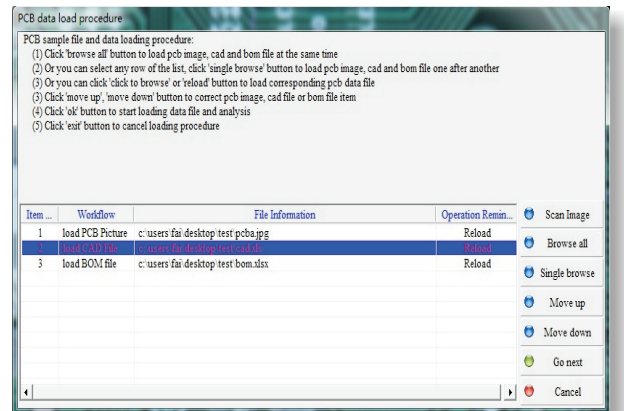
## Duet Display

We provide two displays. Big one shows all the information, the other one just show the current work window. The operator need not raise her/his head frequently.



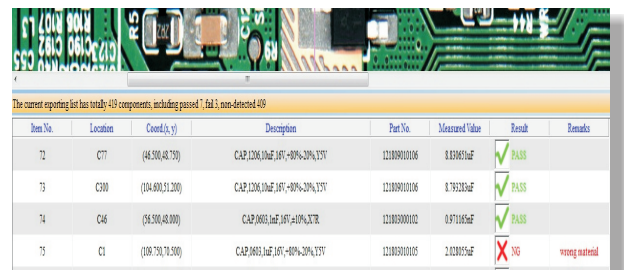
## Programming

Auto generate a test program in under 5 minutes.



## Auto check

For components without markings, a built-in LCR meter can perform test measurements for inductance, capacitance and resistance; the FAI-600IV automatically changes the test frequency based on BOM information.





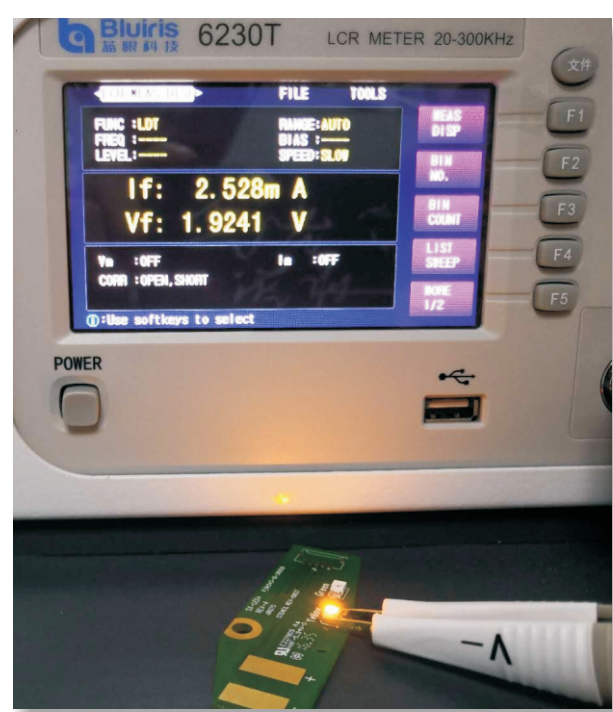
## Auto optical inspection and “Golden Board”

For components with silk screening, the FAI-600IV system checks all components in under a minute. A Golden Board can serve as a test reference.



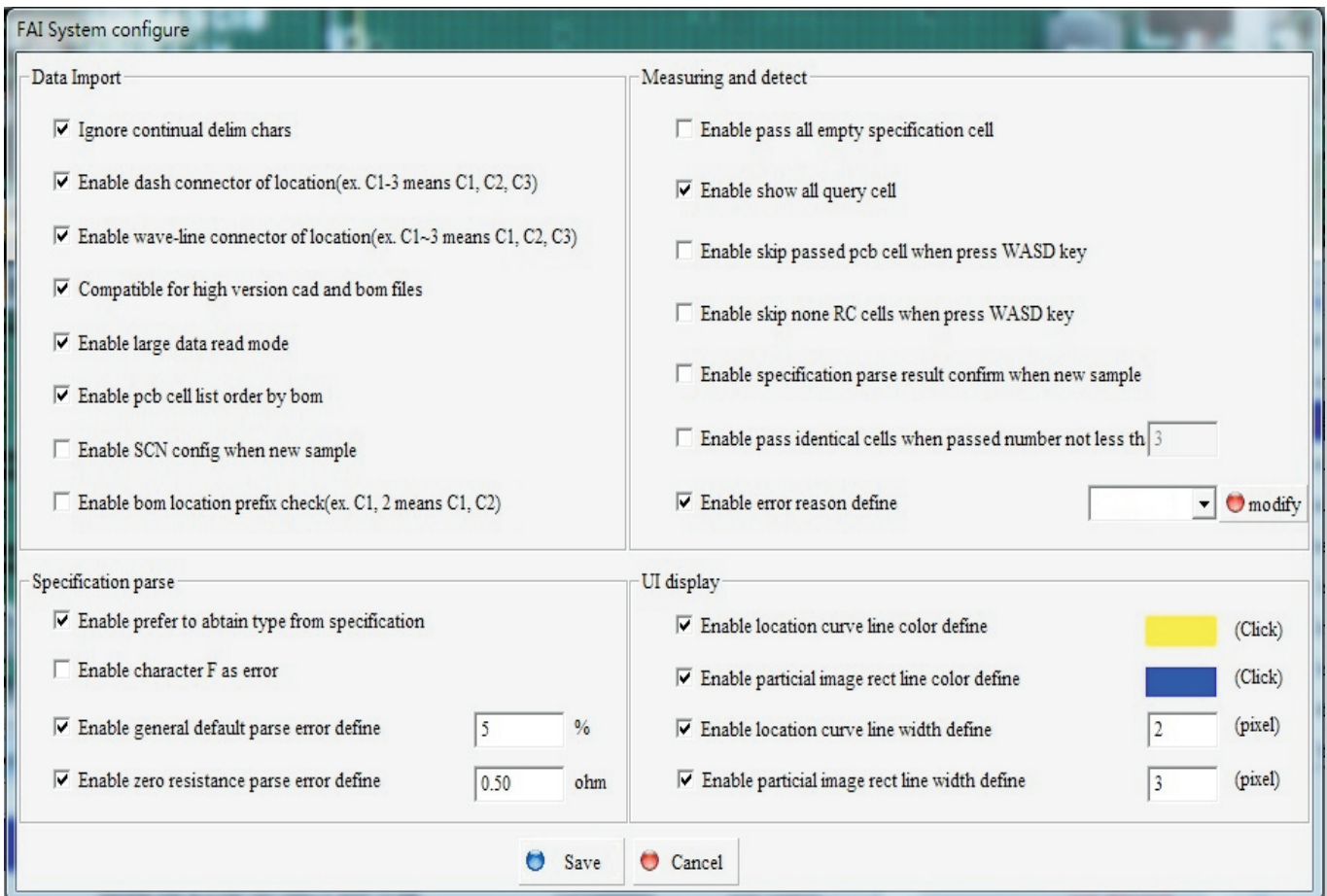
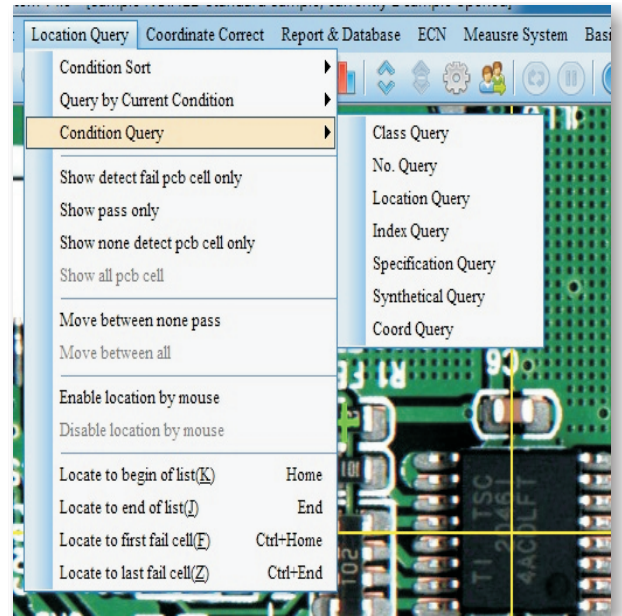
## LED & Diode Test

LCR meter provides LDT function additionally, light on testing on LED, and conductivity test on diode.



## Detailed Search

Report data can be viewed and sorted in a number of different ways. For example, components can be sorted according to whether they have passed or failed a test, or by their part numbers.



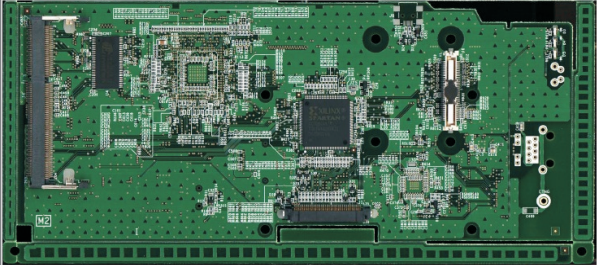
## Report

Each report includes the company's name, test time, operator's name, model number, total number of components, how many components passed and failed. The measured values of all components and their nominal values are also shown. Reports can be viewed, printed, saved or emailed to customers.

### First Article Inspection Report

|                           |                         |
|---------------------------|-------------------------|
| Conclusion : PASS         | Pass Rate : 100%        |
| Company: HPG              | Detector : QA002        |
| Sample : TEST001          | Lot No. :               |
| Customer :                | Batch Qty. :            |
| Scanning Dur. : 00:01:50  | Process Dur. : 00:01:05 |
| Measuring Dur. 00:34:28   | Report Date : 00:00:20  |
| Producing Date 2015-03-11 | Total Inspec. : 419     |
| PASS : 419                | NG : 0                  |
|                           | Non-detected : 0        |

Overall Picture for PCB



| No. | Ref Des | Part No.     | Item Description                | Thumbnail | Stand. Pic. | Measured value | Remarks    |
|-----|---------|--------------|---------------------------------|-----------|-------------|----------------|------------|
| 5   | C17     | 121803020104 | CAP,0603,0.1uF,50V,+80%-20%,Y5V |           |             | 0.105442uF     | PASS(Auto) |
| 7   | C37     | 121803020104 | CAP,0603,0.1uF,50V,+80%-20%,Y5V |           |             | 0.105104uF     | PASS(Auto) |
| 56  | C74     | 121806020106 | CAP,0805,10uF,10V,+80%-20%,Y5V  |           |             | 8.895354uF     | PASS(Auto) |
| 82  | C10     | 121806000225 | CAP,0805,2.2uF,16V,+80%-20%,Y5V |           |             | 2.028108uF     | PASS(Auto) |

## System Docking

FAI system can dock with ERP, MES system, test report can be uploaded or captured by remote server easily.

#### Ftp report upload setting

|                   |                     |  |
|-------------------|---------------------|--|
| Server IP:        | 192 . 168 . 1 . 111 | <input checked="" type="checkbox"/> auto create upload directory |
| Port:             | 21                  |  |
| UserName:         | FAI600              |  |
| Password:         | •••••               |  |
| Upload Directory: | FAIReportText       |  |
| Local Directory:  | D:\FAIERPT          |  |

| Item No.                                | File Format | Upload Allowed? |
|---|-------------|-----------------|
| <input checked="" type="checkbox"/> 001 | txt         | Allowed         |
| <input checked="" type="checkbox"/> 002 | pdf         | Allowed         |
| <input type="checkbox"/> 003            | xml         | Forbidden       |

## FAI-600IV First Article Inspection

- Makes SMT efficient
- Improve quality
- Reduce labor cost
- Optimize work procedures
- Auto test and check
- Trace back

### Comparison between the FAI-600IV and traditional methods

| Criteria     | FAI-600IV     | Traditional            | Note  |
|--------------|---------------|------------------------|---|
| Labor        | One operator  | At least two operators | FAI-600IV can achieve at least 50% labor cost savings                                     |
| Speed        | Fast          | Low to medium          | FAI-600IV reduce test time up to 80%  |
| Accuracy     | Very accurate | Uncertain              | FAI-600IV test results are up to 99.99% accurate and reliable                             |
| Vision       | Clear         | Unclear                | FAI-600IV scans PCBs with the latest optical technologies                                 |
| Verification | Automated     | Human                  |   |
| Report       | Detail        | Unclear                | Reports can be viewed, saved and emailed. They are automatically generated                |
| Auditing     | Yes           | No                     | An operator needs to sign in to the FAI-600IV providing tracking and auditing information |





## Specifications

|                          |   |
|--------------------------|---|
| Maximum Board Size       | 410x310mm, larger size needs customized |
| Maximum Component Height | 26mm                                    |
| Resolution               | 600-2400dpi                             |
| Accuracy                 | 0.05%                                   |
| LCR Meter Test Frequency | 20Hz~300KHz, higher option available    |
| Monitor Size             | 21.5 inch                               |
| Languages Supported      | English/Chinese                         |
| Power Supply             | AC 100~230V 1.2KVA                      |
| Dimension                | W1305xD800xH1200mm                      |
| Weight                   | 200Kgs                                  |

\*Specification might be changed without notice

## OUR END USER AS BELOW



**Shenzhen Bluiris Technology Co., Ltd.**

No.6 Blk.2, Honghui High-tech Park, Liuxian 2 Road,  
Baoan, Shenzhen, China

Email : [marketing@bluiris.cn](mailto:marketing@bluiris.cn)

Website: [www.bluiris.cn](http://www.bluiris.cn)